

What is a Farm?

Age 4-Grade 2

PROGRAM OVERVIEW

Welcome to Cosley Zoo! Your class is full of curious children that are full of energy... and questions. This class is designed to help them understand and appreciate the animals that live on the farm. We will explore the different parts of the animals' home, such as the stalls, yards, and feed room. Your class will have the opportunity to see parts of the zoo that most people do not get to experience, and will finish their program by giving food to the goats or chickens.

Program Objectives:

- to experience certain domestic animals
- to see, touch, and smell the animals' food and bedding
- to compare the animals' home to the children's homes
- to learn about the products we get from farm animals

This class corresponds with the following Illinois learning standards: 4.A.1b, 4.A.1c, 4.B.1b, 12.B.1a, 12.B.1b, 13.B.1d, 17.C.1a

PRE-VISIT ACTIVITIES

Here are some suggested activities for your class to complete before your visit to Cosley Zoo. Having some previous knowledge about farm animals will help your students to get more out of their visit to the zoo. Many of these activities correspond with Illinois learning standards, which are listed after the appropriate activities.

1. Have your class read the story "June's Night on the Farm" (attached), or read it aloud to them. See if they can deduce the meaning of the words listed in red. Definitions are given below. (1.A.1b, 1.B.1d)
Hay: a kind of animal food. It is made of grasses such as alfalfa and timothy that are cut and dried so they can be fed to the animals all year long.
Straw: the leftover wheat stems that are used as the animals' beds. It is soft and yellow.
Stall: an animal's bedroom. Animals are fed and watered and sleep in their stall.
Yard: an animal's backyard. This is where they can go outdoors to get some exercise.
Coop: the building where the chickens sleep at night. This is where their food and water is kept, and where they lay their eggs.
2. Discuss the children's animal experiences. Ask the class to tell stories about their pets (where they sleep, what they eat, what they play with, etc.) or previous experience on a farm (Grandma's house, travels through the country). (4.A.1a, 4.B.1b)
3. Ask your students to predict what they will see at Cosley Zoo by answering the following questions. After your field trip, revisit their answers to see whether they were correct. (4.A.1b, 4.B.1b, 5.A.1a)
 - Which animals do you think we will see on the farm?
 - How do you think the animals' homes will be similar to yours?
 - How do you think the animals' homes will be different from yours?
 - Do you think the animals will have a kitchen?
 - Do you think the animals will have bedrooms?
 - Do you think all the animals will eat the same type of food?
 - Do you think the animals' food will look like your food?
4. Pass out a copy of the "My Favorite Farm Animal" sheet to each student. Ask them to choose their favorite and cut it out. Have the students tape their pictures to the wall or a large sheet of paper to create a bar graph. Ask them questions such as:
 - Which animal(s) got the most votes?
 - Which animal(s) got the fewest votes?
 - Did any animals have the same number of votes?(6.D.1, 10.A.1a, 10.A.1b, 10.B.1b, 10.B.1c, 11.A.1e, 11.A.1f)

POST-VISIT ACTIVITIES

The following post-visit activities will help you to extend your visit to Cosley Zoo. Corresponding learning standards are listed after each activity.

1. Distribute the worksheet called “My Trip to the Farm”. Ask each student to write a letter to a family member describing the farm at Cosley Zoo. (3.A.1, 3.B.1b, 3.C.1a, 5.C.1a)
2. Play animal sound charades! Each student should choose an animal from the farm and make its noise. The other students should then guess which animal is being portrayed. (4.A.1c, 26.A.1c)
3. Use a large piece of paper or posterboard to create a farm. The students can cut out pictures from magazines or draw pictures to represent the different animals and their homes. Make sure they include food, water, and shelter for each animal. (3.C.1b)
4. Distribute the “Find the Farm Animals” worksheet. Ask students to draw a circle around the farm animals and a square around the non-farm animals. (9.A.1b)
5. Distribute the “Where Does it Come From?” worksheet. Ask students to match the animal with the product we get from it. (13.B.1d)

If you have questions or comments about your visit to Cosley Zoo, please share them with us. Call 630-665-5534 or send them to:

Education Supervisor
Cosley Zoo
1356 Gary Ave.
Wheaton, IL 60187

June's Night on the Farm

June is a draft horse that lives at Cosley Zoo. One night, she decided she was going to have an adventure. After all the zookeepers went home for the night, June walked out of her **stall** and began to explore the barn.

The first thing she saw was the **stall** of her friend, Pro. Pro is the pony that lives next to her. He said, "June, what are you doing out of your **stall**? You know that you shouldn't be loose in the barn. Get back in there before you get into trouble."

"Oh, Pro, you worry too much," said June. "I'm just going to visit the other animals. I won't get into any trouble." She walked away towards the other side of the barn.

Next she saw the sheep. The sheep did not notice her at all. They had a big pile of delicious green **hay** in front of them. They were so busy having their dinner that they did not even hear her as she walked by.

June walked all the way down to the end of the barn. There she found the cows sleeping in the **straw**. Cows were so silly! "They slept lying down! I always sleep standing up!" thought June. She laughed at them again before walking away.

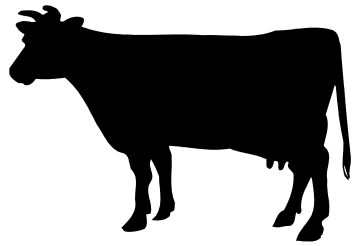
Then June noticed that the barn door was open. She decided to walk out and see the chickens. It was always fun to watch them running around. When she got out to the chicken **yard**, she did not see any chickens. "That's funny," said June. "I always see them playing in their **yard** during the day."

June walked over to the chicken **coop** and peeked in the window. All the chickens were inside the **coop**, where they were safe and warm. Some chickens were sleeping, some were eating, and some were getting a drink of water. She even saw one chicken laying an egg! "The chickens must stay in their **coop** all night," thought June.

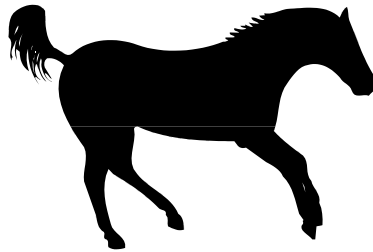
Just then, it started to rain very hard. June saw lightning and heard the loud thunder. She ran back to the barn, but the door had closed and she could not get in. She got very nervous. "Why did I leave my **stall**?" she said to herself. "If I had stayed inside, I would be safe and warm right now." June just stood there as she got wetter and wetter...

Just then, June woke up! She looked around her. Wait a minute! She was back in her **stall**. There was plenty of **hay** in the rack and soft, warm **straw** under her feet. She had been dreaming the whole time! "I'll never leave my **stall** at night again," thought June. She took a bite of **hay**, got comfortable in the **straw**, and went to sleep.

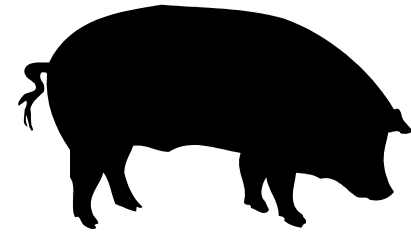
My Favorite Farm Animal



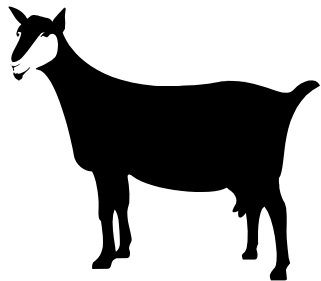
Cow



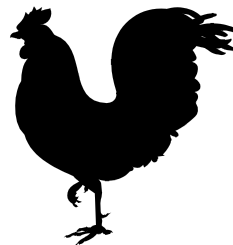
Horse



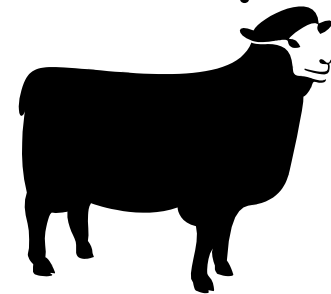
Pig



Goat



Chicken



Sheep

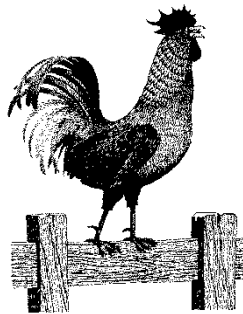
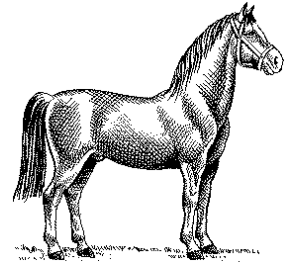
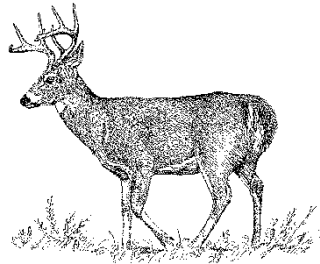
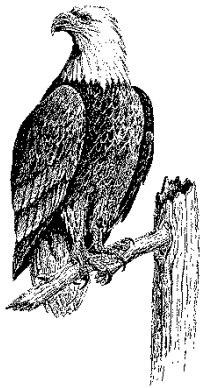
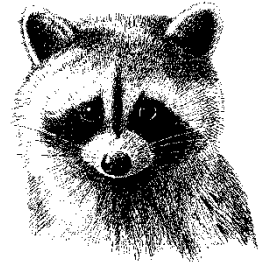
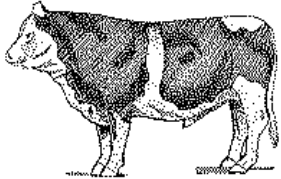
My Trip to the Farm

Dear

Sincerely,

Find the Farm Animals

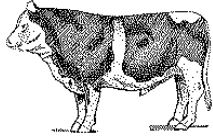
Draw a circle around the animals that DO live on a farm. Draw a square around the animals that DO NOT live on a farm.



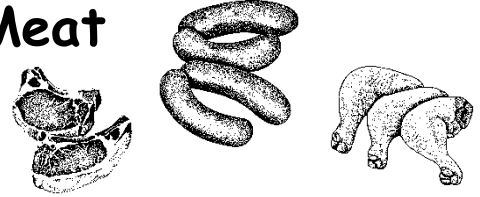
Where Does it Come From?

Draw a line between the animal and the product that we get from it.
Some animals may go with more than one product.

Cow



Meat



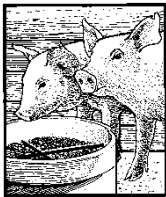
Chicken



Milk



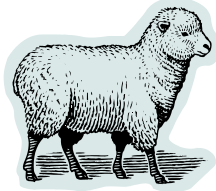
Pig



Eggs



Sheep



Sweater



Goat

